



Fig 1 A-Z area map, Brunswick shown in red

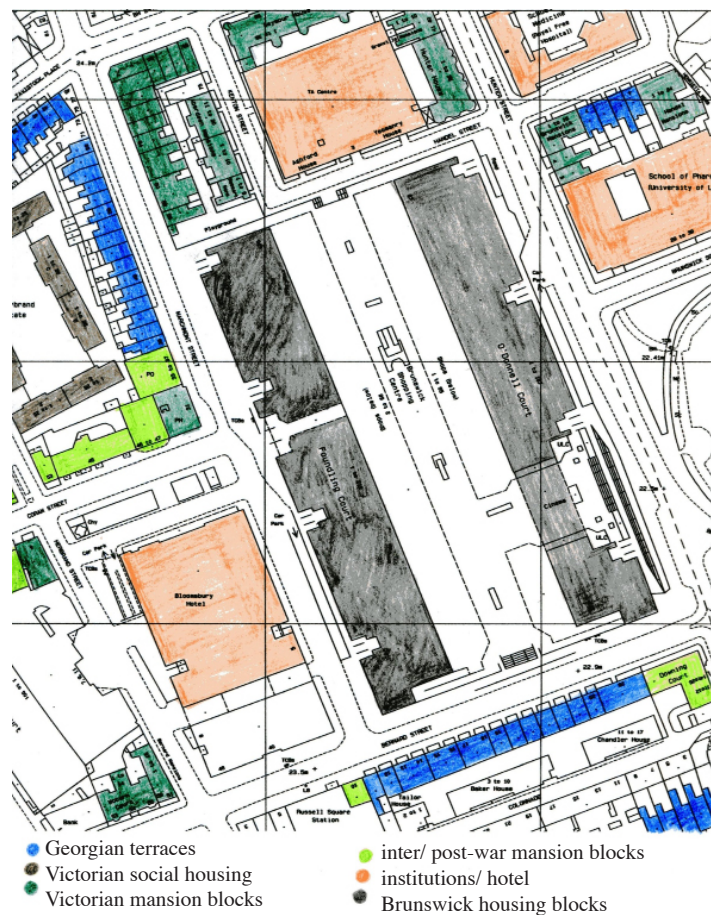


Fig 2 Ordnance Survey site plan, showing relative scale of buildings



Fig 3 Brunswick viewed from Marchmont Street, to west



Fig 4 Brunswick viewed from Brunswick Square, to east



Figs 5 and 6

Fig 5 (above) Brunswick 2006, view North through precinct
Fig 6 (right) Brunswick 2006, Coram Arcade entrance off Marchmont Street
(photos S.Stone)



Fig 7



Fig 8



Figs 8 and 9



Fig 7 Brunswick 1972, view through balcony door to sky (photo R.Einzig/ AR)
Fig 8 Brunswick 2005, view of winter gardens from Brunswick Sq (E)
Fig 9 view from Foundling Court of Brunswick pre-refurbishment (2000)
Fig 10 view from Bernard St, Brunswick 2000

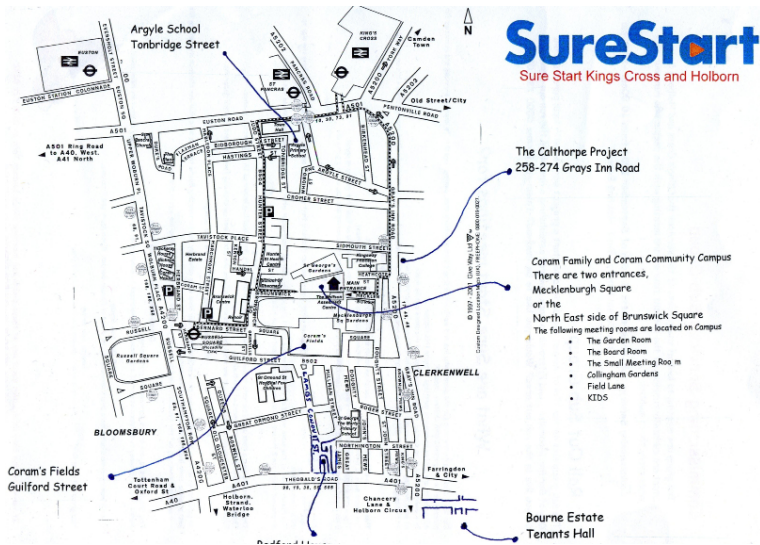


Fig 11



Fig 13



Fig 11 Sure Start area map: Brunswick shown in red
Fig 12 Kings Cross quarter map, Brunswick in pink
Fig 13 Brunswick TRA newsletter Dec 2004
Fig 14 British Library Euston Rd map, Brunswick to South
Fig 15 Sketch-map of 18th C Bloomsbury, from Summerson 1945
Fig 12 (left)
Fig 15 (below)



Fig 14

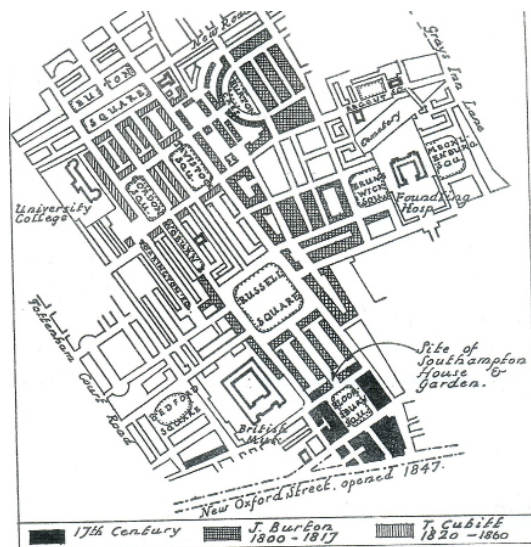


Fig. 23. Sketch-map of Bloomsbury, showing approximately the areas developed by Burton and Cubitt.



Fig 16 local context: (top to bottom, L to R) Corams Fields, Bernard St terrace, Herbrand St estate, Peabody estate, Downing Court (Bernard St), Coram St housing opp Holiday Inn, Handel St terrace, Russell Mansions (Coram St), Cromer St estate



Fig 17 a (photo S.Stone) & b



Fig 18 a & b (photo S.Stone)



Fig 19 a & b (photos S.Stone)

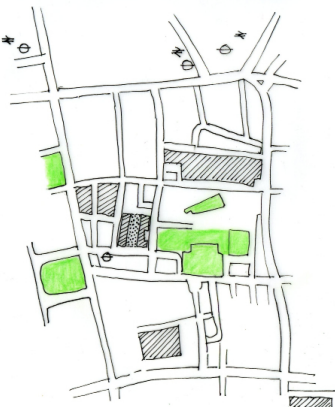


Fig 20

Fig 17 views through Renoir portal from east and west
 Fig 18 Brunswick fenestration
 Fig 19 a Foundling Ct, west front, 2006
 Fig 19b Renoir portal from east, 2006
 Fig 20 map showing location of key housing estates in vicinity of Brunswick



Fig 21 O'Donnell Ct facade 2006 (photo S.Stone)

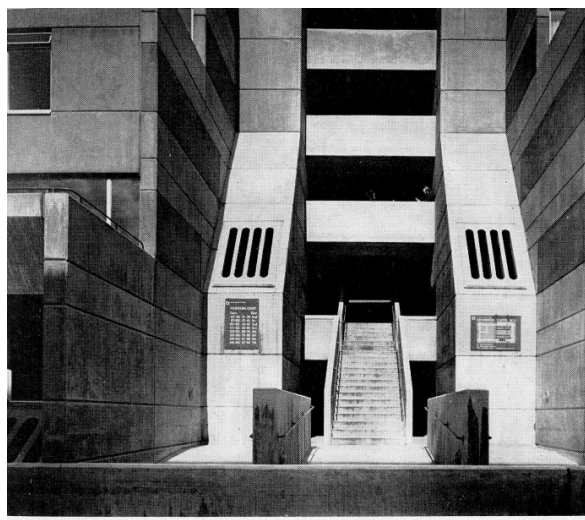


Fig 22 precinct arcade pre-refurbishment

Fig 23 podium level 1972 (photo R.Einzig/ AR)



Fig 24 street entrance 1972 (photo R.Einzig/ AR)



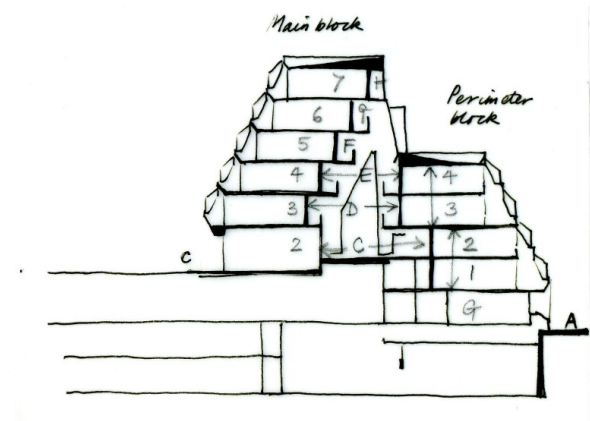


Fig 26 (above) cross section through housing block showing lower perimeter block to street, and higher main block to precinct
Fig 27 (below) podium level plan showing relationship of housing blocks to central space

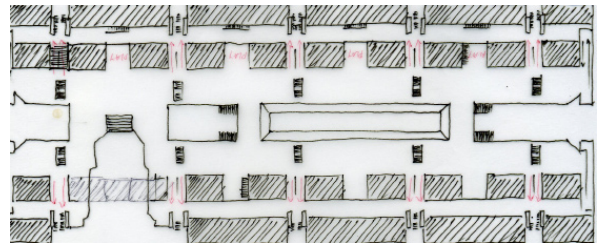


Fig 25 (above) & 28 (below) view through atrium space 2006
(photos S.Stone)





Fig 29 views through and from access galleries
(photos S.Stone, bottom left and right)



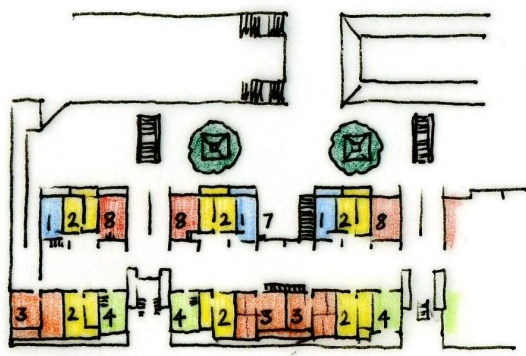


Fig 30

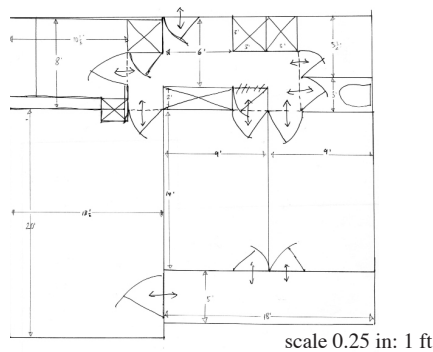


Fig 32

- 1 studio flat (blue)
- 2 1-bed flat (yellow)
- 3 2-bed flat (orange)
- 4 maisonette (green)
- 8 studio-office (red)

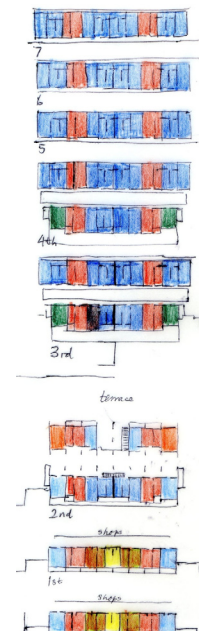


Fig 31

Fig 30 plan of podium level accommodation, showing flat types
Fig 31 vertical section showing disposition of flat types on each floor

Fig 32 plan of two-bed flat

Fig 33 view out through living-room windows

Fig 34 a & b extracts from materials specifications, photographed from original drawings

Fig 35 view towards back of living-room, showing blow-out heating grille (kitchen partition removed)



Fig 33



Fig 35

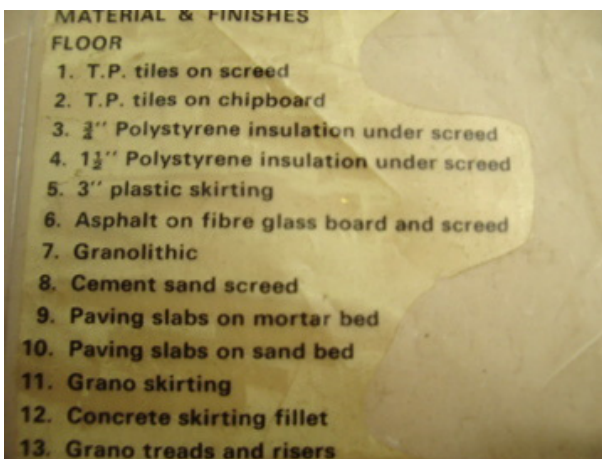
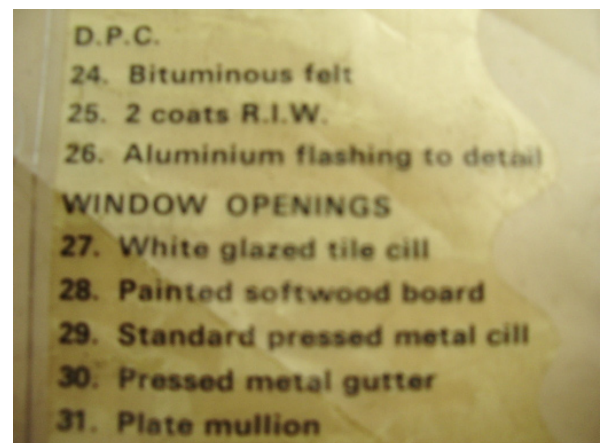


Fig 34 a & b



The changing face of Bloomsbury: as the old buildings come down, almost all that's left is the roof where three years ago W-Pc Margaret Cleland snatched a baby from death and won the George Medal

By
**MICHAEL
BARSLEY**

In Marchmont Street, they still look up at the house on the corner of Coram Street, and remember the Riddy on the Roof.

Three years ago today, a young policeman pleaded and struggled for more than two hours, while the father balanced precariously on the railings with the child in his arms.

"Can you see a voice of sanity?"

Pauline Dore, known as Margaret Cleland, opposite. He took it out to the policeman, meaning the impressionist landscape for March 3, 1964, was a victory and day. I was out of luck, she snatched the baby a quarter of an hour before evening time.

"I was a wonderful woman," said IEM construction Bill West, whose firm was an Riddiawalla-Bellington award, "when she got picked up the day. Look, I had a new film in."

Margaret Cleland, of Gray's Inn Road police station, was a well-known local resident, the Queen, when investigating it to her. "I saw it all in the house, it was thrilling, three days, the family and the shooting have died. Miss Cleland, a popular girl, so after she died in the March 3, 1964, she had just the Riddy on the Roof. And, fantastically, that corner house still stands since and a wide acreage of demolition."

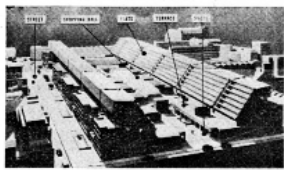
Reduced

"We call it the House of Grace and Power," said a designer, "in the redevelopment scheme."

Fig 36



ABOVE: The site as it looks today.



WHEN EARNINGS F

How to make ends meet when prices rise and incomes don't is a problem facing some of the Evening Standard readers who have sent in their family budgets. Take, for example, the case of a young husband with a wife and two children who is expecting to do less overtime this year.

To be sure with the help of his overtime earnings his budget has just about balanced. He has the savings and is

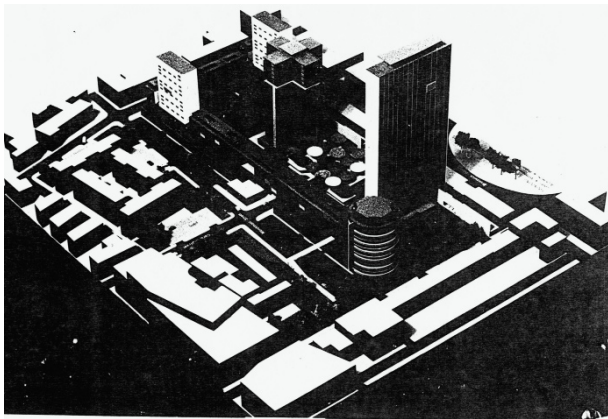


Fig 37



Fig 38

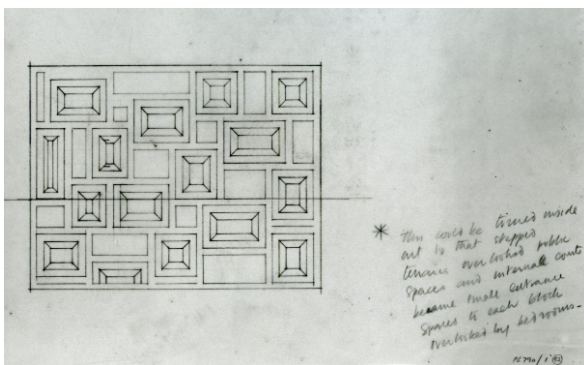


Fig 39 a & b

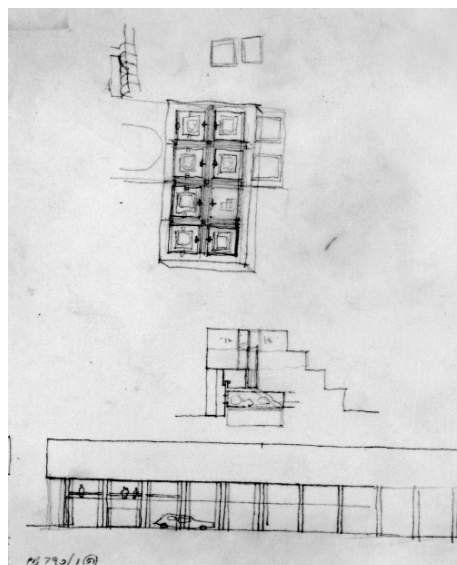


Fig 36 extract from *Evening Standard*, 3rd May 1967 showing image of cleared Foundling Estate development site
Fig 37 model of Covell Matthews scheme
Fig 38 view of LCC Loughborough Estate
Fig 39 a & b early concepts for the Brunswick by P.Hodgkinson (RIBA Drawings Collection)

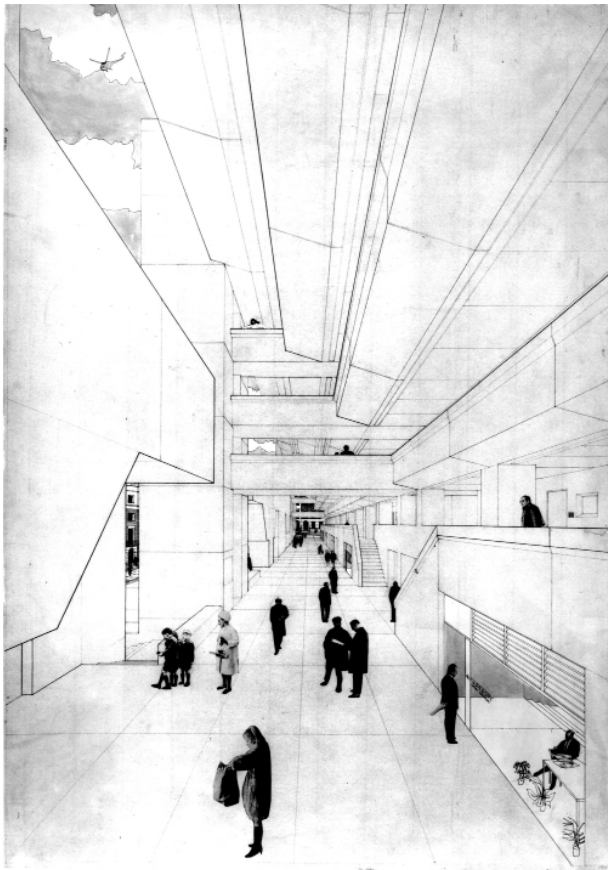


Fig 40

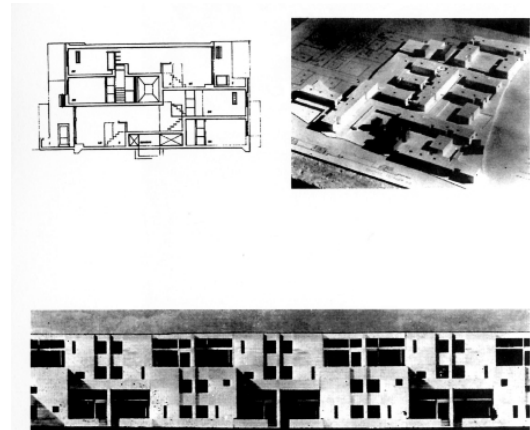


Fig 41

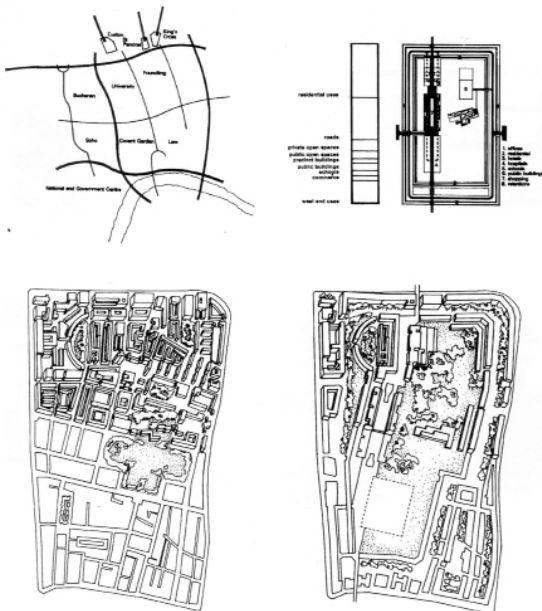


Fig 42



Fig 43

Fig 40 early collage perspective through concourse space (P.Hodgkinson)

Fig 41 St Pancras housing scheme, Hodgkinson/ Martin: cross section, aerial view of model, facade (clockwise from top L)

Fig 42 diagrams showing rationalisation of Foundling Estate site, as published in Martin and March 1972

Fig 43 aerial view of site, with Brunswick scheme superimposed, showing concept of extended north-south axis (P.Hodgkinson/ AR)

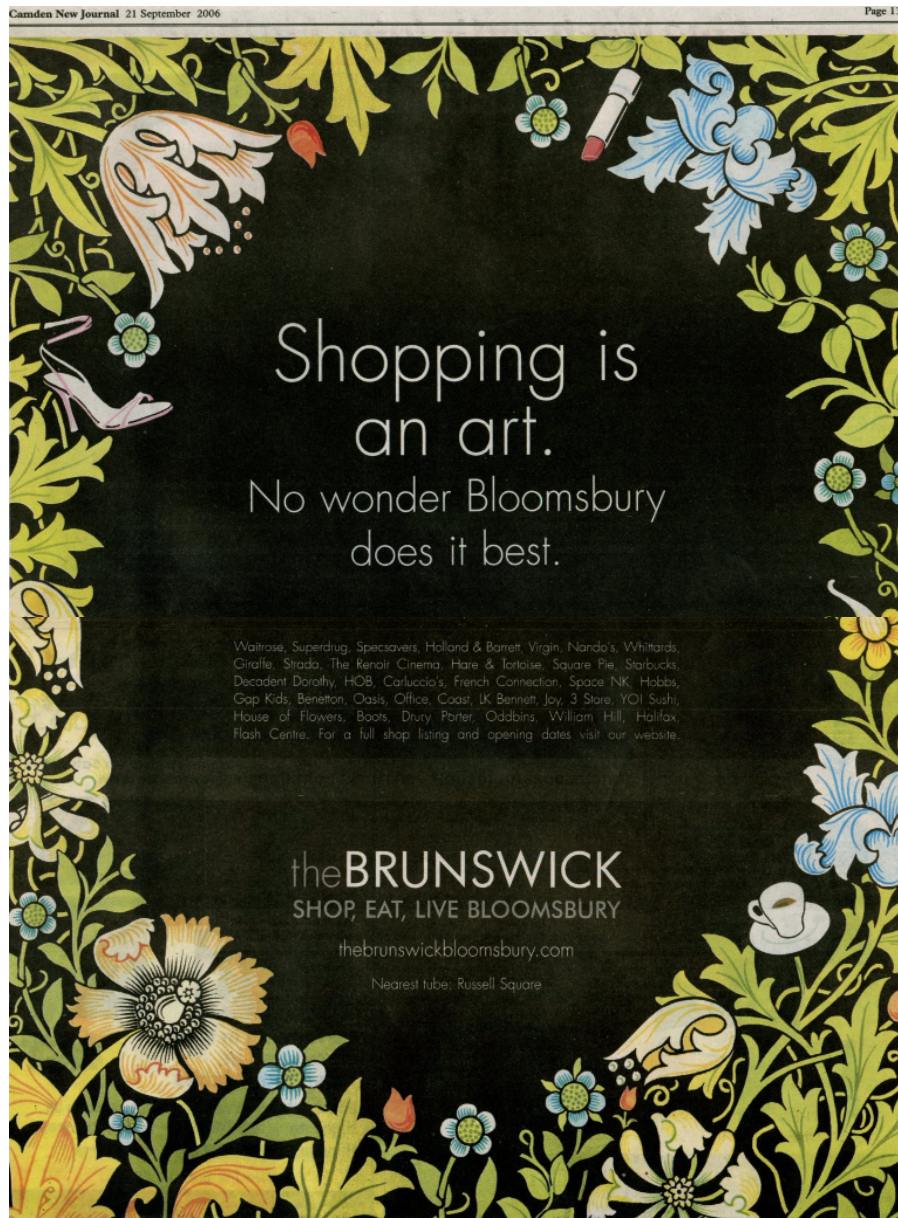


Fig 44 re-branding and redevelopment of the Brunswick, 2005-06: newspaper advertisement (above), site display (bottom left), construction site with new supermarket building (bottom right)



Catalogue of ethnographic images

(interior and exterior photographs 2006, S.Stone; exterior photographs pre-2006, C.Melhuish)



