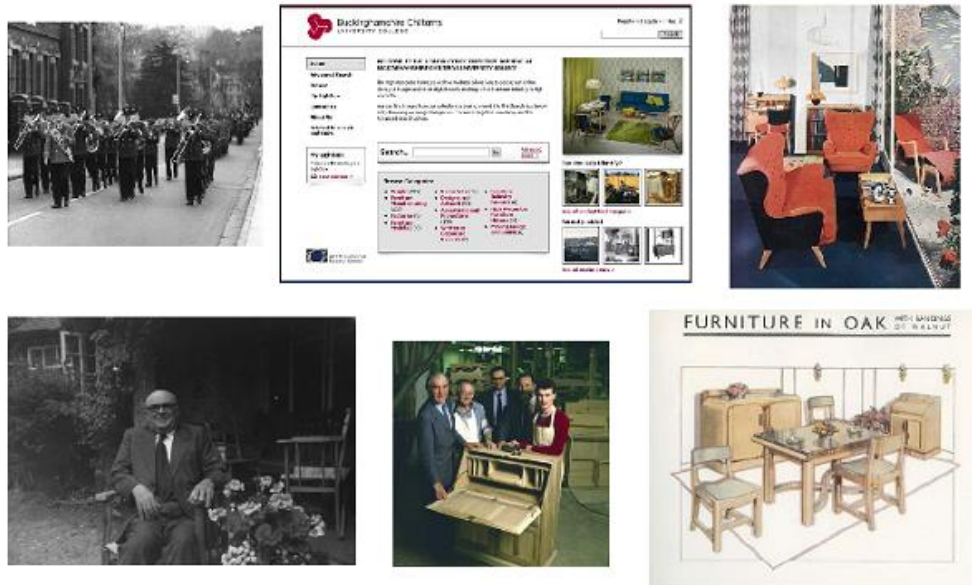


Appendices

Appendix A

High Wycombe Furniture Archive at BCUC



Sharing Information about Wycombe's Furniture History

Figure A1 High Wycombe Electronic Archive Poster: *Buckinghamshire Local History Network Annual Conference & Fair 'Buckinghamshire's Industrial Heritage'*. High Wycombe (Kaner and Grover, 2007a)



Figure A2 High Wycombe Electronic Furniture Archive Launch. In: *High Wycombe Library Exhibition*. Jake Kaner, Jonathon Arnold, Sally Scagell, Tom Dean, Sharon Grover (Kaner and Grover, 2009b)

Appendix B

Selection of images from the design press with references to High Wycombe companies



Figure B1 Antique Explorer, July 2006. References to G-Plan furniture, the Housemaster Chair and Coffee Table



Figure B2 Design Week, September 2007. Ercol Furniture



Figure B3 Grand Design, December 2008. Ercol 'stacking' Chair



Figure B4 Grand Designs, November 2010. G-Plan coffee table

Appendix C

Mr Peach
C/o Dr Catherine Grigg
Wycombe Museum
Priory Avenue
High Wycombe
HP13 6PX

28 September 2006

Dear Mr Peach,

I work at High Wycombe College, and am working on a Furniture Archive project, based on materials from the High Wycombe Furniture Industry.

I met up with a Catherine Grigg from Wycombe Museum earlier this week and she mentioned that you had met with her and she thought you might be able to help me.

From what I understand you had worked in the industry, and have some connection with the Utility Scheme?

If it is OK with you, I would very much like to meet up with you and discuss this area. I am also working towards a PhD on this subject, in which Catherine is my supervisor and your knowledge would be invaluable to me.

I very much hope to meet up with you soon.

Kind regards,

Sharon Grover

Appendix C continued

ORAL HISTORY COLLECTION

Biographical Information

Please would you provide some biographical information which will form a valuable historical context to the interview for future researchers.

Personal details such as your address and telephone number will be treated confidentially by BCUC.

Please leave blank anything that you feel is not appropriate or you do not want to divulge.

- Full name:
- Address:
- Telephone number:
- Date of birth:
- Place of birth:
- Number of brothers and/or sisters:
- Names of schools/colleges:
- Occupation(s) (with dates):
- Date of marriage(s):
- Husband/wife's occupation(s):
- Children (number and sex):
- Father's occupation(s):
- Mother's occupation(s):

Thank you for this information.

Appendix C continued

ORAL HISTORY COLLECTION

Copyright and Restrictions

Transferring copyright of the interview to BCUC is important so that we and researchers can use it as a historical source.

Please also state below whether there are any restrictions to its use that you would like to make.

.....

.....

The interview can be used for.....

(please delete as appropriate)

- study by researchers yes/no
- educational use yes/no
- broadcast yes/no
- publication yes/no
- in an exhibition yes/no
- other restrictions yes/no

I transfer the copyright of the interview to BCUC

Signed.....

Date

Appendix D

Images from meetings and interviews throughout the study



Figure D1 Gordon Gray and Sharon Grover, 7 June 2011



Figure D2 Image taken by the author at Gordon Gray's home with his original award winning chair, 8 December 2010



Figure D3 Gordon Gray's award winning chair, cited in *The Cabinet Maker* in Chapter 11.



Figure D4 Gordon Gray, Peter Batchelor, Angela Forward, Sharon Grover, 7 June 2011



Figure D5 Photo taken by the author of Lesley Dandy and Jake Kaner, 9 January 2007



Figure D6 Photo taken by the author of Mr Raymond Peach, Manager at Glenisters, shortly before his death, 1 February 2007 (In 1950 in the City and Guilds examinations, Raymond John Peach won first prize, silver medal and the Southern Furniture Manufacturers prize of £3 3s 0d)

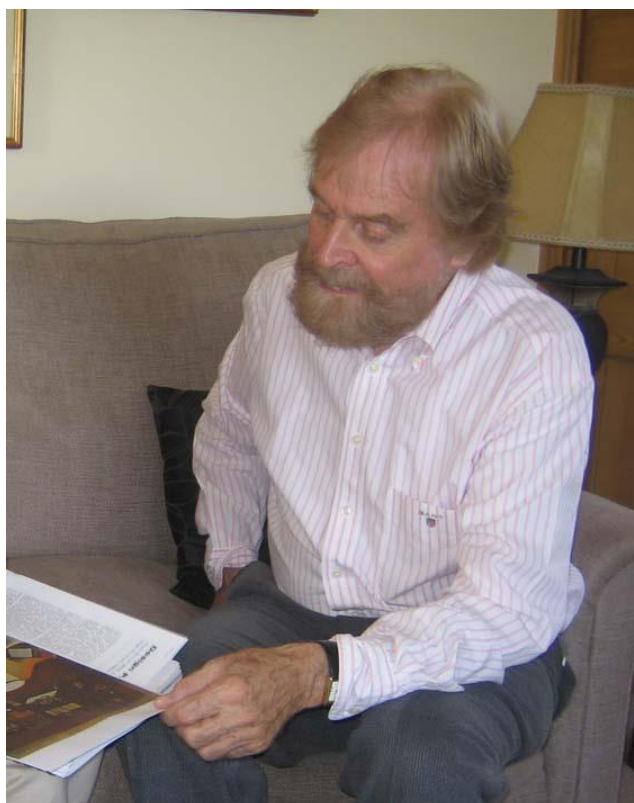


Figure D7 Photo taken by the author of Mr Roger Bennett, 10 June 2008



Figure D8 Photo of Left: Peter Batchelor and Right: Jonathon Arnold, 7 June 2011



Figure D9 Photo taken by the author of Mike Pengelly & Brian Rodgers (past Ercol employees) 13 December 2008

Appendix E

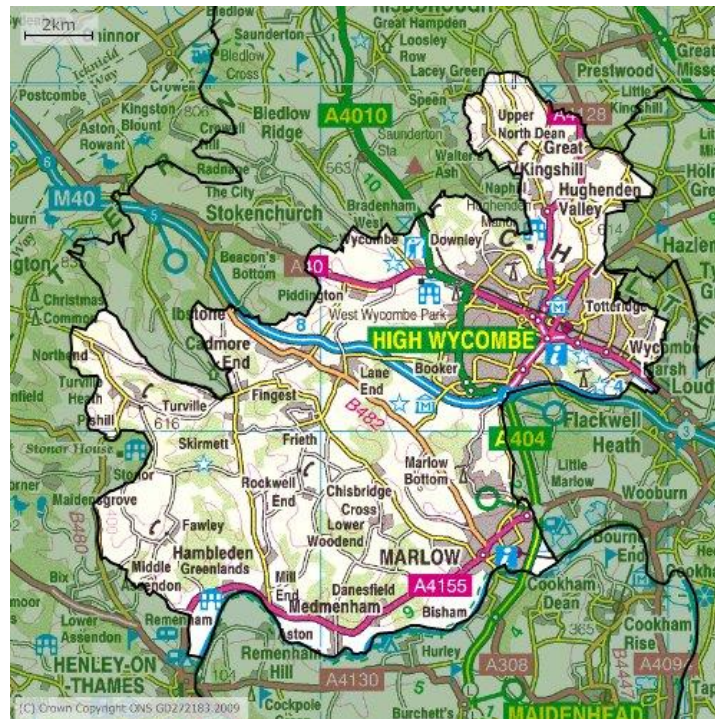


Figure E1 Maps of High Wycombe Boundary for NOMIS reports, Left:1971-81 Right: 1981-2007 (NOMIS, 2009)

Appendix F

Photographs taken by the author



Figure F1 Antocks Lairn, Cressex Industrial Estate. 18 May 2006



Figure F2 William Bartlett, Grafton Street. Left: 10-07-2006 Right: 1 February 2007



Figure F3 William Birch, Leigh Street 1 February 2007



Figure F4 Will Beck Ltd, Kitchener Chair Works, Kitchener Road, 27 September 2006



Figure F5 Stewart Linford Factory and Show room, Kitchener Road, 27 September 2006



Figure F6 Hands of Wycombe, Dashwood Avenue, 1 February 2007



Figure F7 Wycombe Cane & Rush Works, Desborough Street, 22 May 2007



Figure F8 Owen Haines (Mayor of High Wycombe) Door panels now, 6 October 2007

Appendix G



Figure G1 Left: J Goodchild with finished chair outside his workshop Naphill Right: Chair bodger (George Dean) shaping legs on a 'horse' with a draw knife, Hampden woods, Bucks



Figure G2 Shaping of a Windsor chair seat on a spindling machine, Plumridge Saw Mills, High Wycombe



Figure G3 Sawing up elm log into planks with a horizontal saw at Plumridge Saw Mills, High Wycombe (used in the film strip “A Windsor chair is made”)



Figure G4 Fitting the bow in the seat of a machine made Windsor chair, Owen Haines & Sons High Wycombe

Appendix H

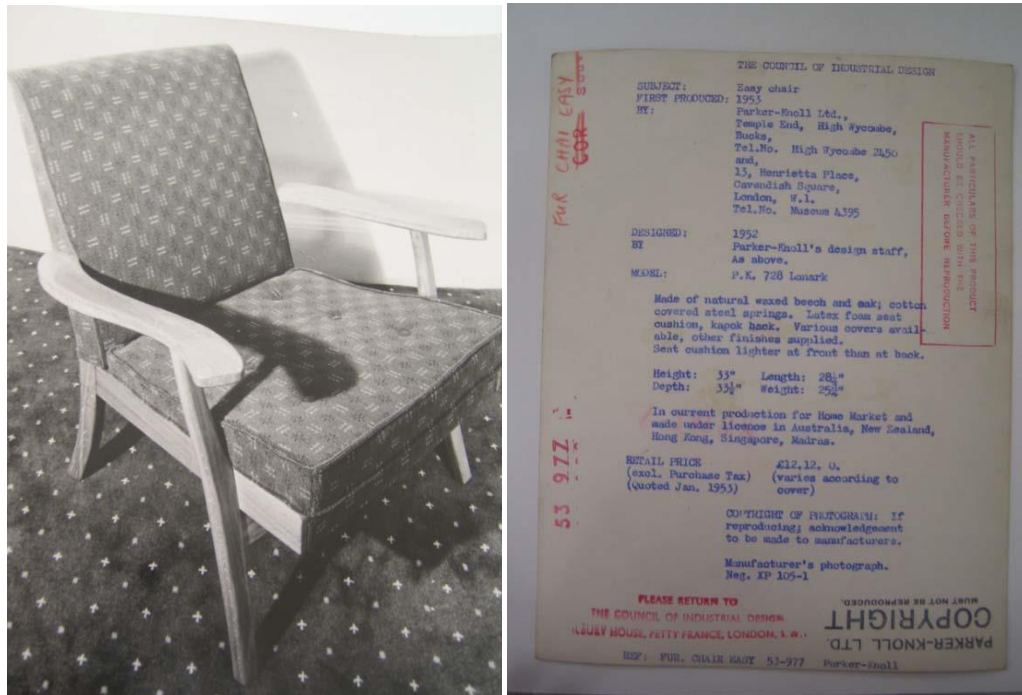


Figure H1 Parker Knoll Ltd, P.K. 728 Lanark Easy chair designed in 1952, from the COID collection of photographs, Design Council Archives



Figure H2 Ercol Furniture Ltd, Armless easy chair model 427, designed by Lucian B. Ercolani and Donald Pedal in 1958



Figure H3 E. Gomme Ltd, Easy chair and matching stool, model 6250/6254, designed in 1962 (G-Plan's 'World's Most Comfortable Chair' designed by Paul Conti)



Figure H4 Machine made Utility Windsor dining chair, manufactured by Owen Haines & Sons, High Wycombe, c. 1940s



Figure H5 Goodearl Brothers Ltd, Daybed with combined stool model 4738/9, designed by E.L. Clinch 1956



Figure H6 Ercol Furniture Ltd, Easy chair and stool model 442/443, designed by Lucian B. Ercolani and Donald Pedal in 1959



Figure H7 Show house at Sale, for the Manchester Evening News and the Council of Industrial Design, March 1952, furniture by Furniture Industries Ltd High Wycombe



Figure H8 G-Plan furniture at the Design Centre, from December 7 1959 to January 2 1960, made by E. Gomme Ltd



Figure H9 The manufacture of Utility Furniture at a High Wycombe Factory. (this machine will cut out dovetail joint in less than ninety seconds, compared to the twenty minutes of the most skilled craftsman) c. 1940s



Figure H10 Television broadcast 'What's in a chair', October 25th 1947, demonstration showing the manufacture of a chair



Figure H11 Television broadcast 'What's in a chair', 25 October 1947. Harry Cutler of the Technical School, High Wycombe, Gordon Russell and Frank Austin discussing the Bruno Mathsson 1934 'Eva' plywood chair



Figure H12 Television broadcast 'What's in a chair', 25 October 1947, demonstration showing the manufacture of bent-wood furniture with the aids of moulds and clamps



Figure H13 Television broadcast 'What's in a chair', 25 October 1947, demonstration showing the manufacture of a Windsor chair (Jack Goodchild, although unreferenced)

Appendix I



Figure I1 Newspaper advertisement for G-Plan from London Evening Standard showing dressing table, stool as well as drawing of settee. One of the very earliest G-Plan advertisements dated 23 April 1953(HWeFA, 2009h)



Figure I2 Newspaper advertisement for G-Plan from the London Evening News, 8 June 1953. One of the earliest advertisements for the range. Photograph shows room set with dining table, chairs and sideboard; B400 settee and B400 armchair and coffee table. Also shown is drawing of armchair and side table¹(HWeFA, 2009i)

¹ This image appears in the G-Plan New Models folder for 1954-1955 and the designer is noted as 'VBW' Victor Bramwell Wilkins.

Appendix J

The following Images are taken by the author during a visit to Houghall College, cited in Ercolani's biography where some of his furniture is still in situ



Figure J1



Figure J2

Appendix K



Figure K1 The author with Martin Jourdan (student placement at Parker Knoll) 1992

Appendix L



Figure L1 Furniture displayed at the 'Festival' held at High Wycombe, 1951, Reproduction suite (Anon., 1951e)

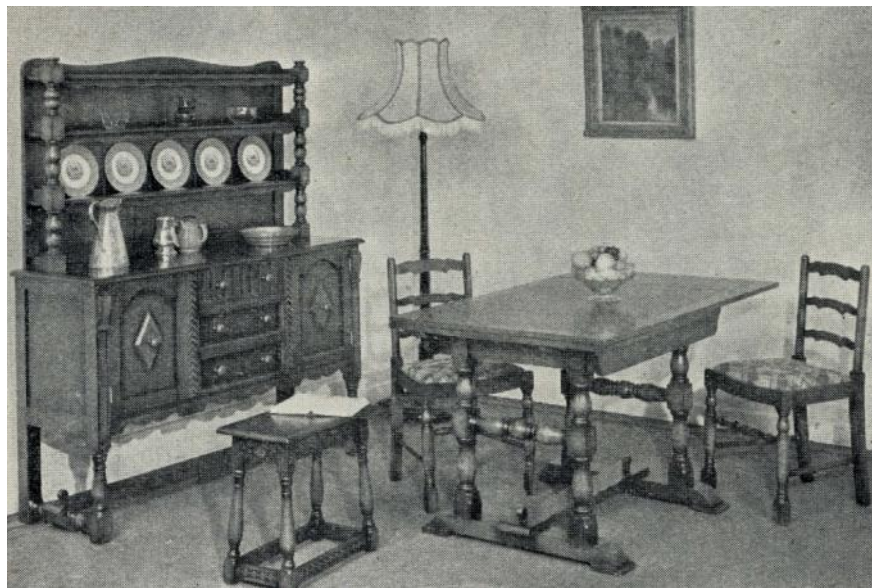


Figure L2 Furniture displayed at the 'Festival' held at High Wycombe, 1951, Utility dining set with Welsh dresser in dark oak (Anon., 1951e)



Figure L3 Furniture displayed at the 'Festival' held at High Wycombe, 1951, Non-Utility settee (Anon., 1951e)

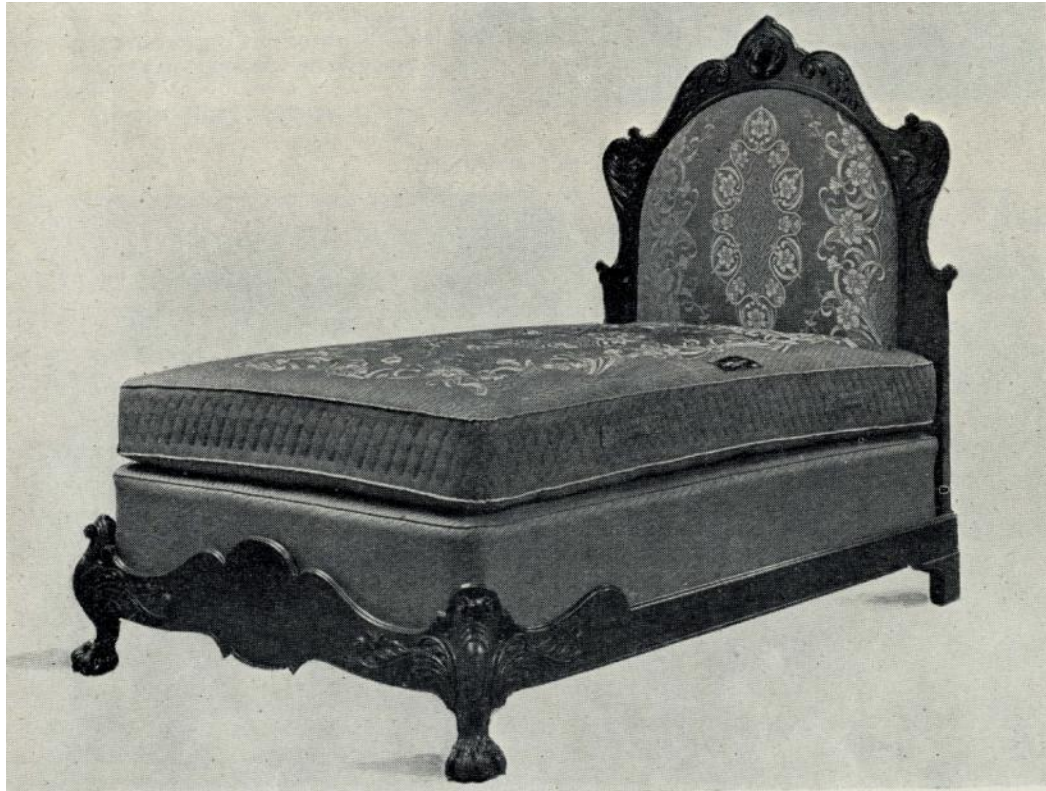


Figure L4 Furniture displayed at the 'Festival' held at High Wycombe, 1951, Bedstead, which Wycombe exports² (Anon., 1951e)



Figure M5 Her Royal Highness the Duchess of Kent visiting the High Wycombe firm Nichols & Janes, she was quoted as saying, 'I did not know things like this (reproduction furniture) were still being made.' (Anon, 1950a).

² It was reported in April 1953 that nearly 80 per cent of the production of high quality reproduction furniture made by Mines & West Ltd is exported, principally to North American markets



Figure L6 New GPlan bedroom furniture and described as 'Chinese look'. (Anon., 1956a)



Figure L7 G-Plan van (Anon., 1957c)



Figure L8 Ceremonial archway of Wycombe made chairs greeted the Queen when she visited High Wycombe (Anon, 1962b).

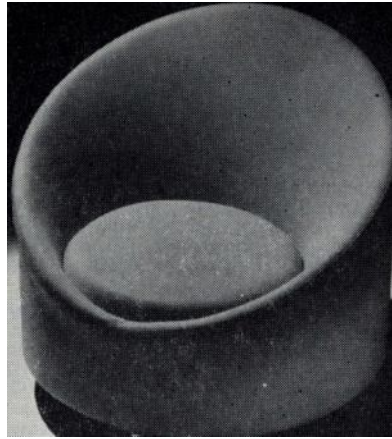


Figure L9 Evans introduction of the Go-Go Chair designed by Roger Bennett (Anon, 1967d).



Figure L10 Springtime elm living and dining range from G-Plan, finished in a medium stain called Hazel (Anon., 1982b)

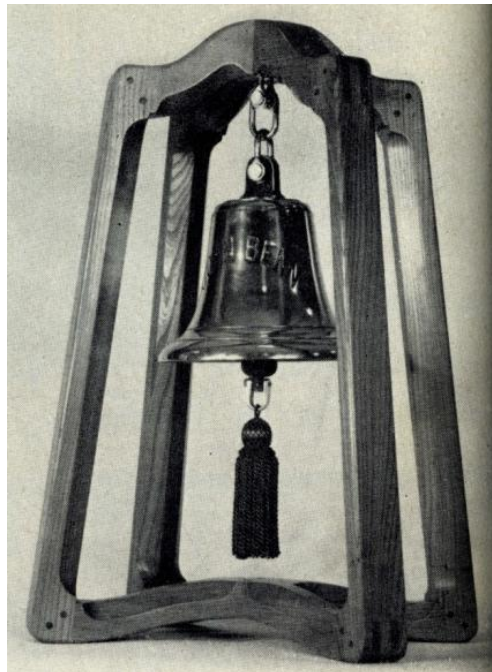


Figure L11 Commemorative 'ships bell' designed by Ercolani in memory of the late Sir John Williams Bell, founder of the Cabinet Maker (Anon., 1979b)



Figure L12 Michael Pengelly (Anon., 1979b)

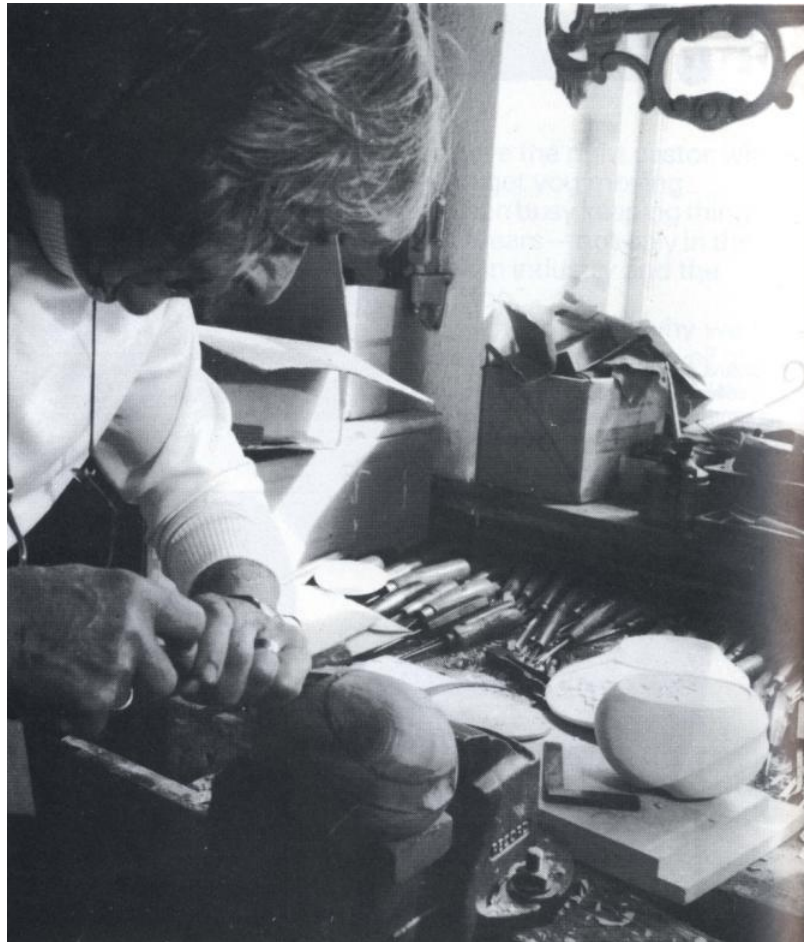


Figure L13 Frank Hudson carves the finished work (Anon., 1979b)



Figure L14 Ercol Renaissance range (Anon., 1995a)

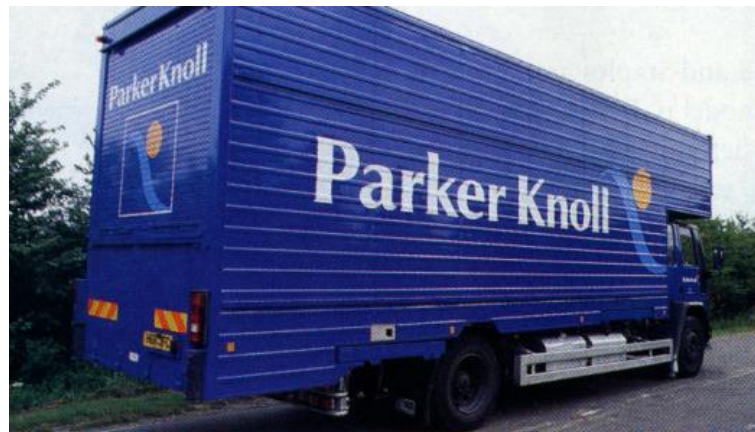


Figure L15 Parker Knoll lorry (Anon., 1996b)



Figure L16 Students at High Wycombe receiving instruction in one of the school's workshops (Anon., 1979a)

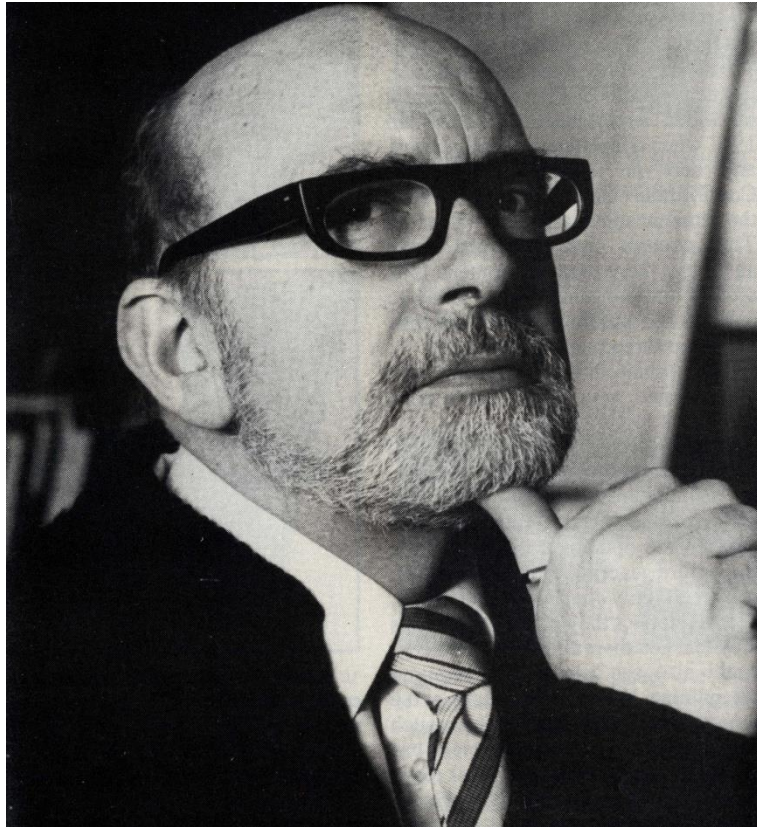


Figure L17 Paul Conti (designer at G-Plan) also taught at High Wycombe College for a short time (Anon., 1982a)

Appendix M



Figure M1 Donald Gomme with Mr Pastry - Richard Hearne, at G-Plan launch 1953(HWFA, 2009).



Figure M2 Max Bygraves, Julie Andrews, John Pertwee, unknown (possibly Sylvia Peters) & Mr Pastry (Richard Hearne) at G-Plan launch 1953 (HWFA, 2009).



Figure M3 Ted Gomme with John Pertwee G-Plan launch 1953 (HWFA, 2009).



Figure M4 1950s film set (HWFA, 2009).



Figure M5 Vic Wilkins and Leslie Dandy in the prototype shop with experimental styrene moulding and wire mesh chair in background (HWFA, 2009).